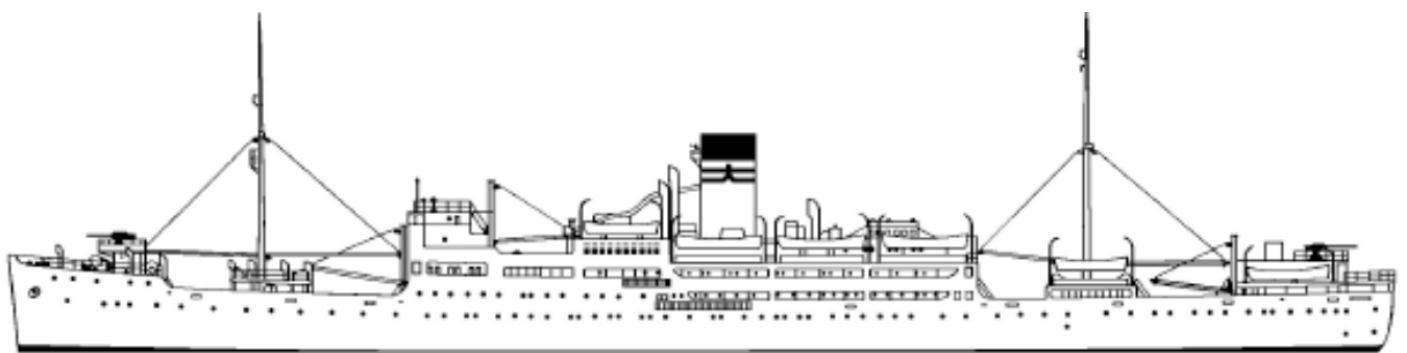
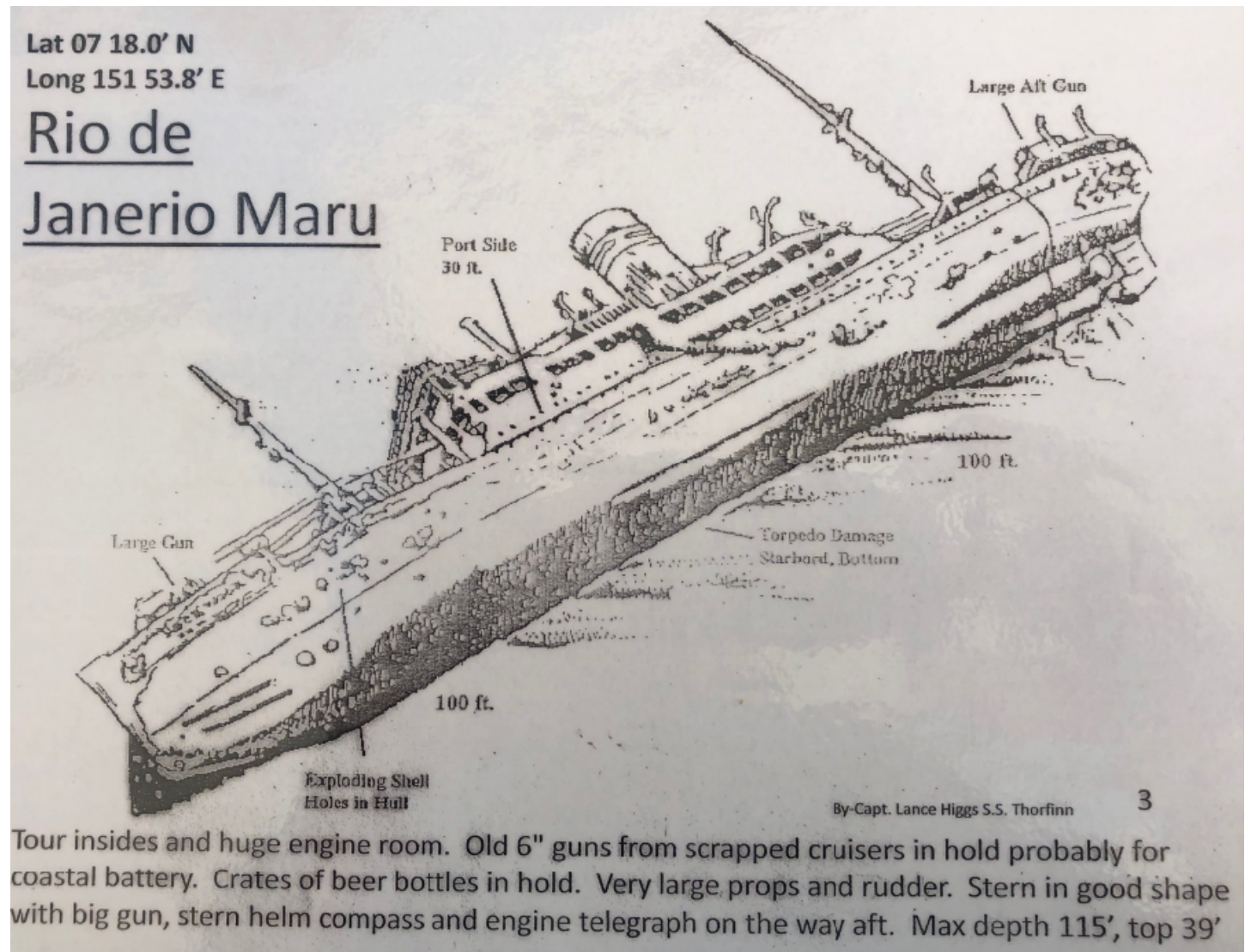


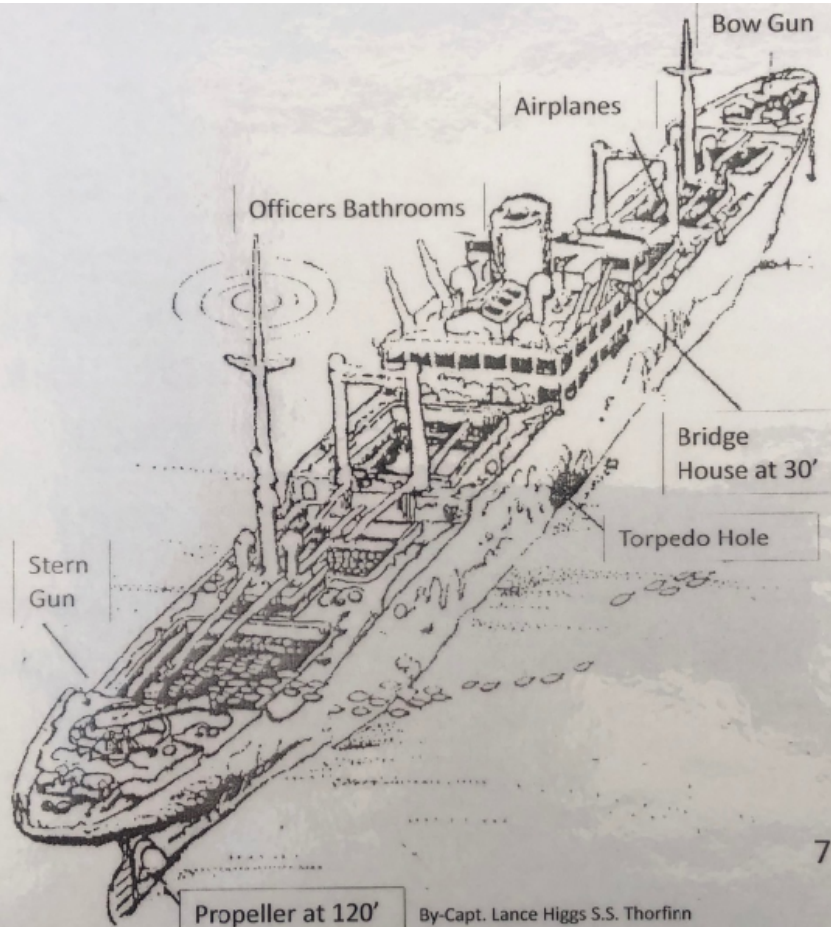
Shots/Dive List

DSC9723-9814 Rio De janeiro Maru



Lat 07 20.5'N
Long 151 52.8'E

Fujikawa Maru

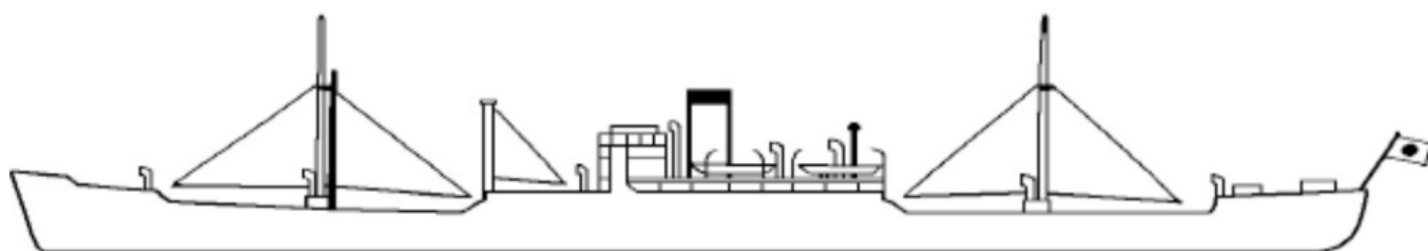
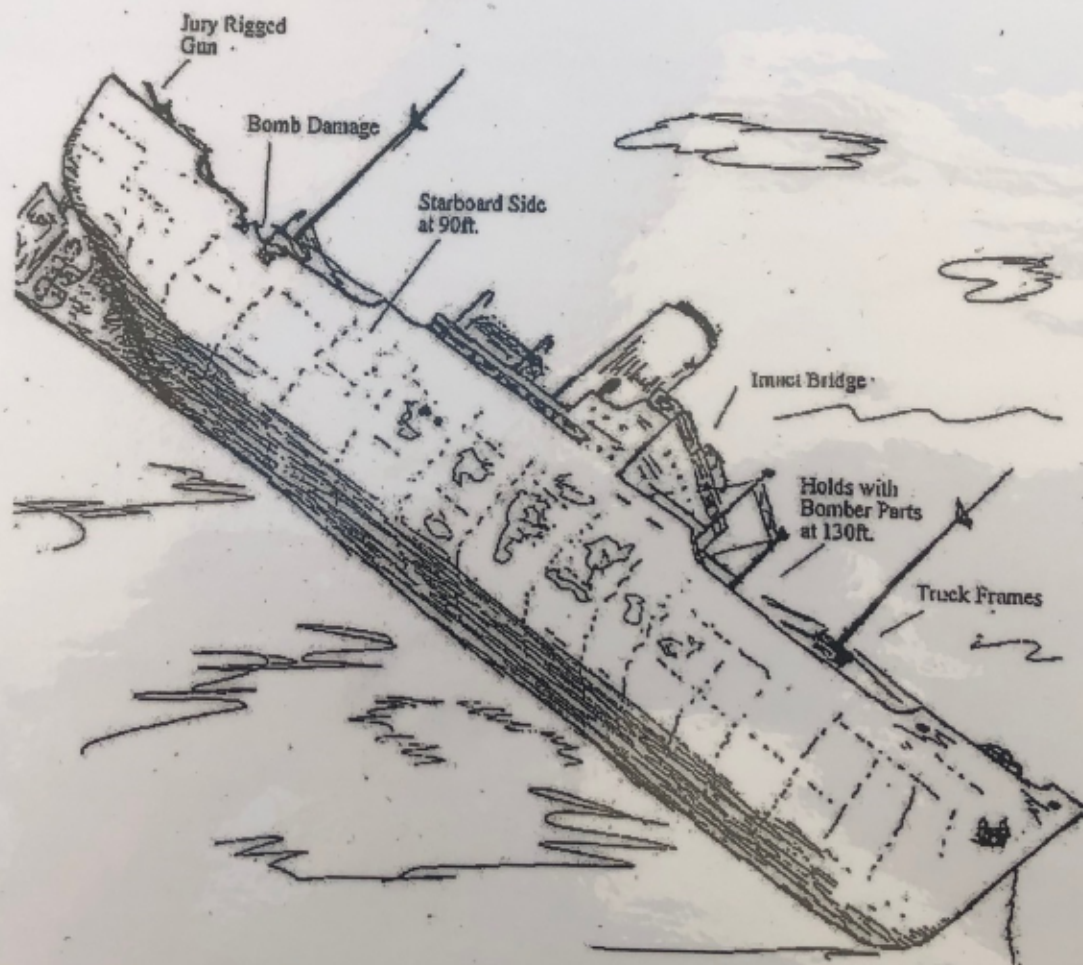


Must visit the engine room and machine shop (R2D2). Holds with Zero parts (fuselage, engines, wings), shells, machine guns and gas masks. Can swim through wreck and out through the torpedo hole that sank her. Bow gun with sign. Memorial. Max depth 112', deck 60', top 30'



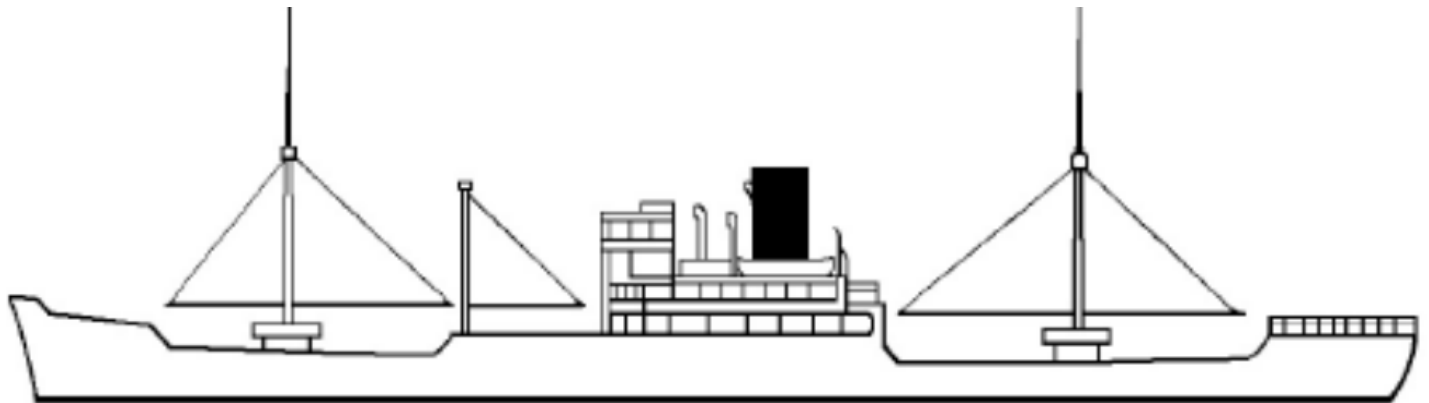
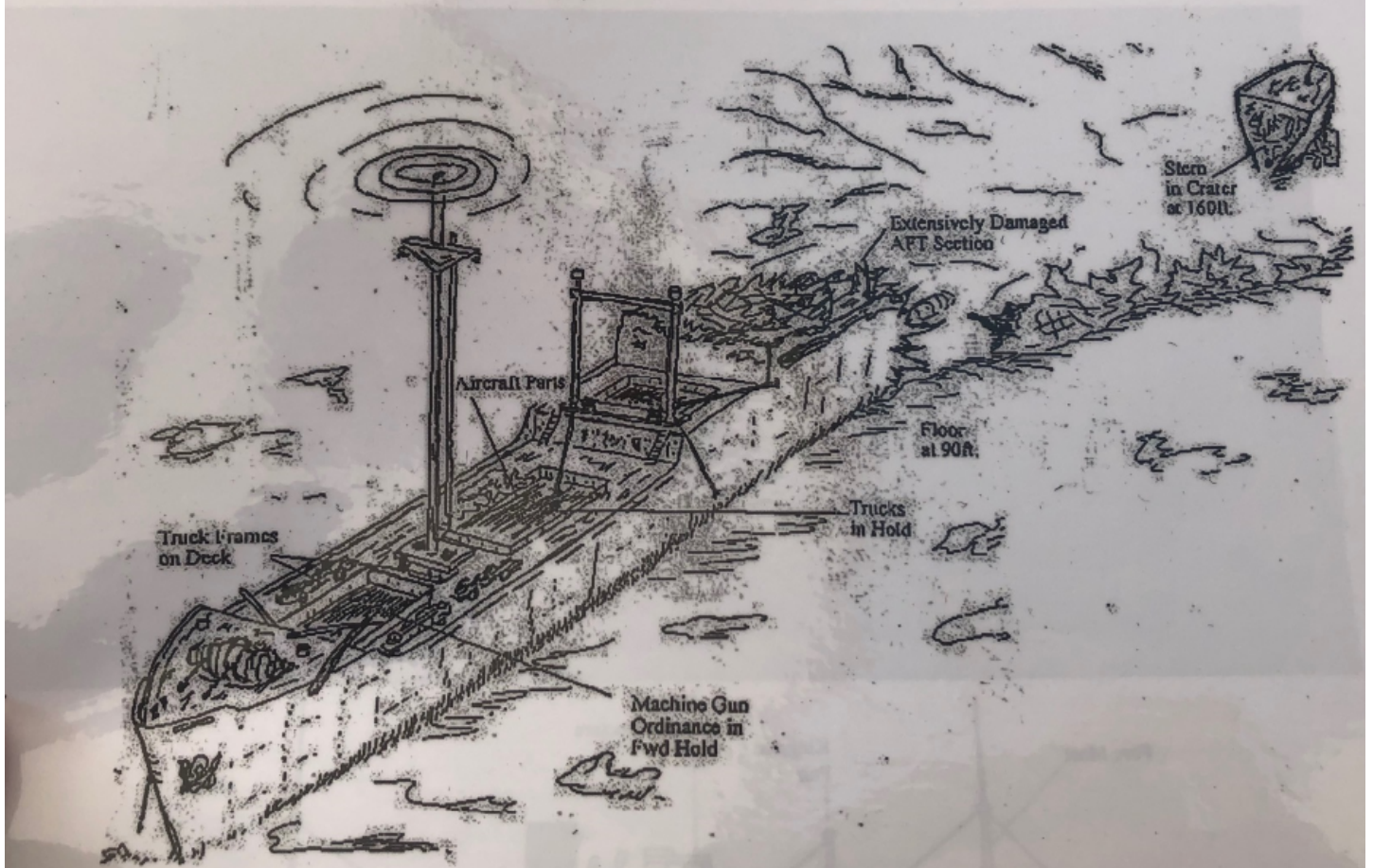
Depth
Shallowest ~ 27m
Deepest ~ 40m

Momokawa -Maru



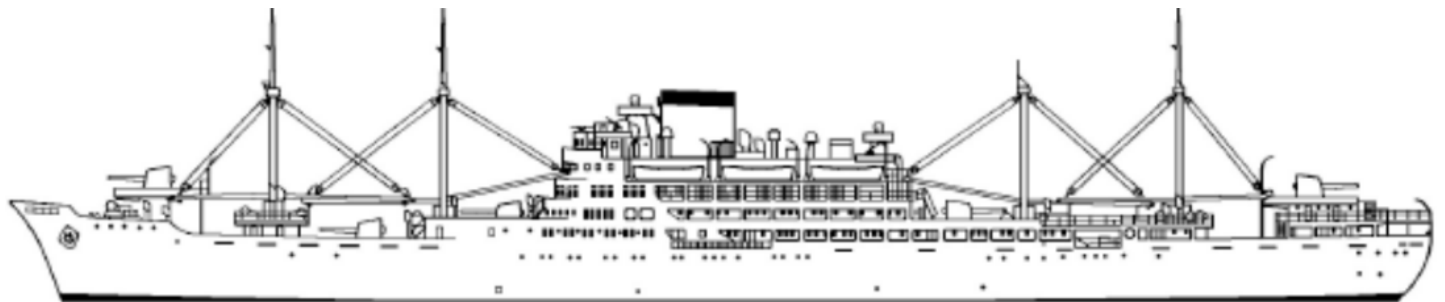
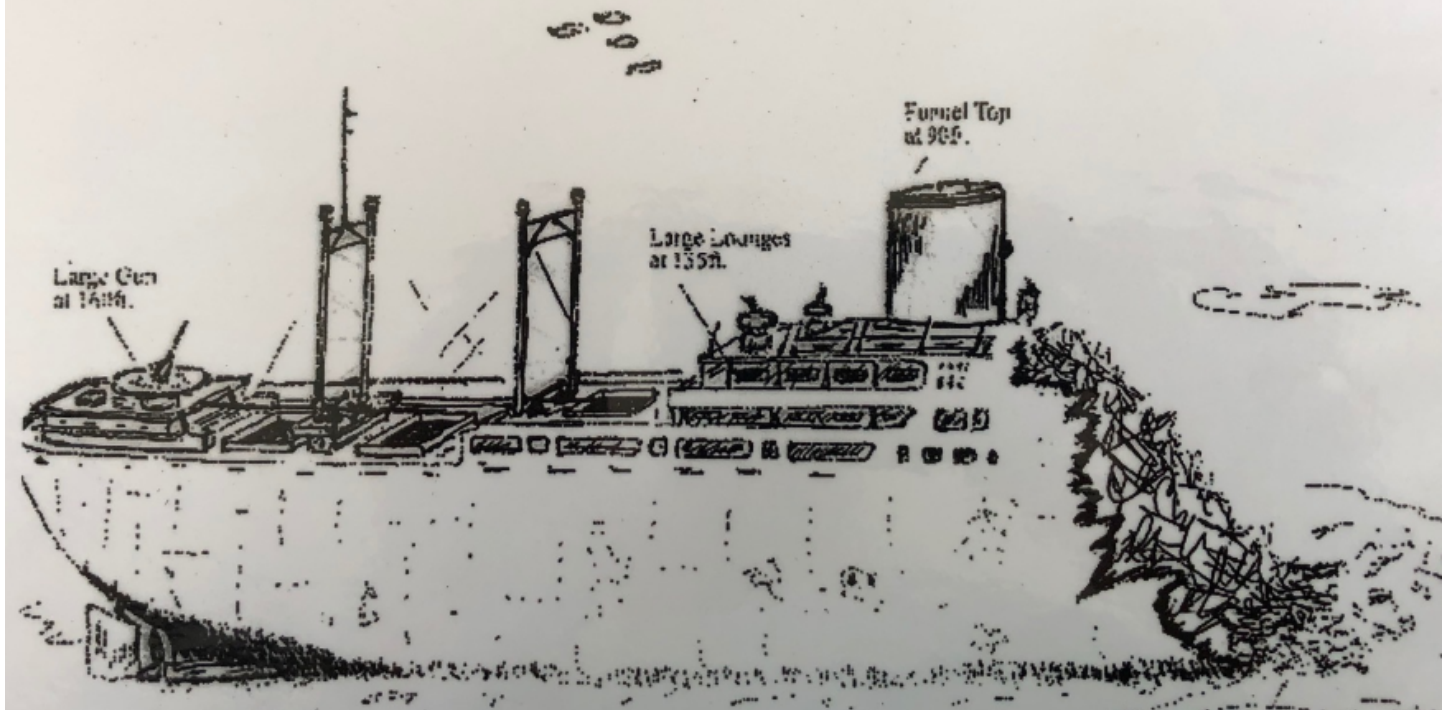
Depth
Front section ~ 1-27m
Stern Section ~ 48m

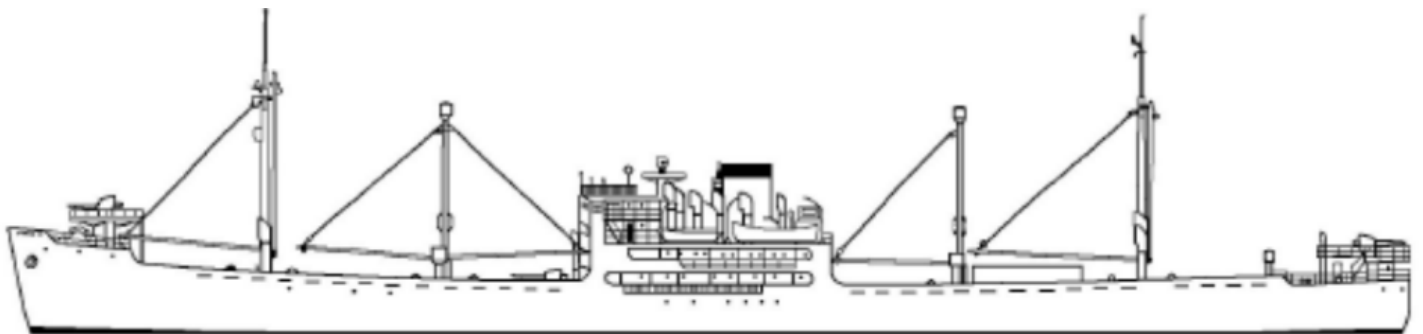
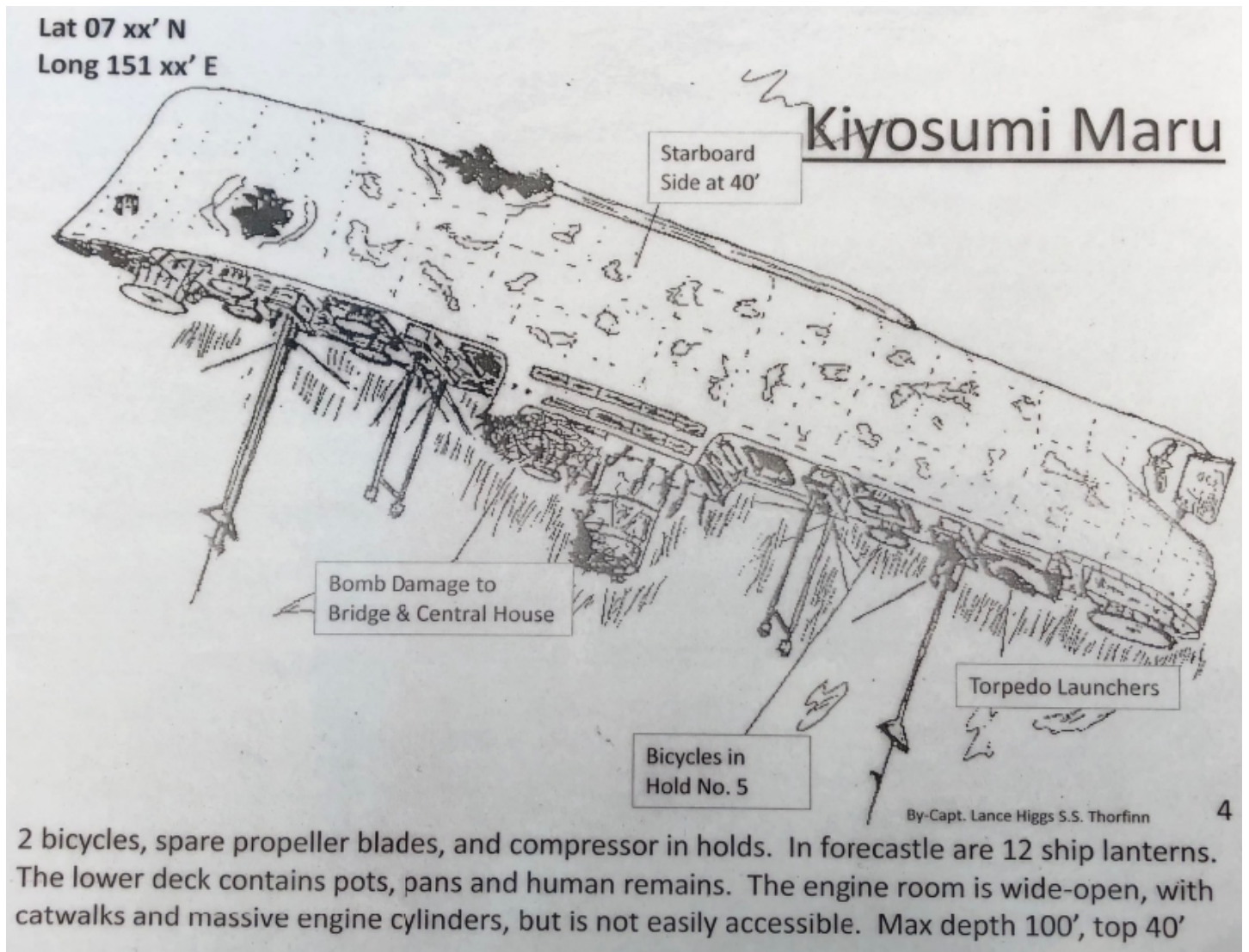
Sankisan- Maru



Depth
Funnel Top ~ 25m
Seafloor ~ 64m

Aikoku – Maru



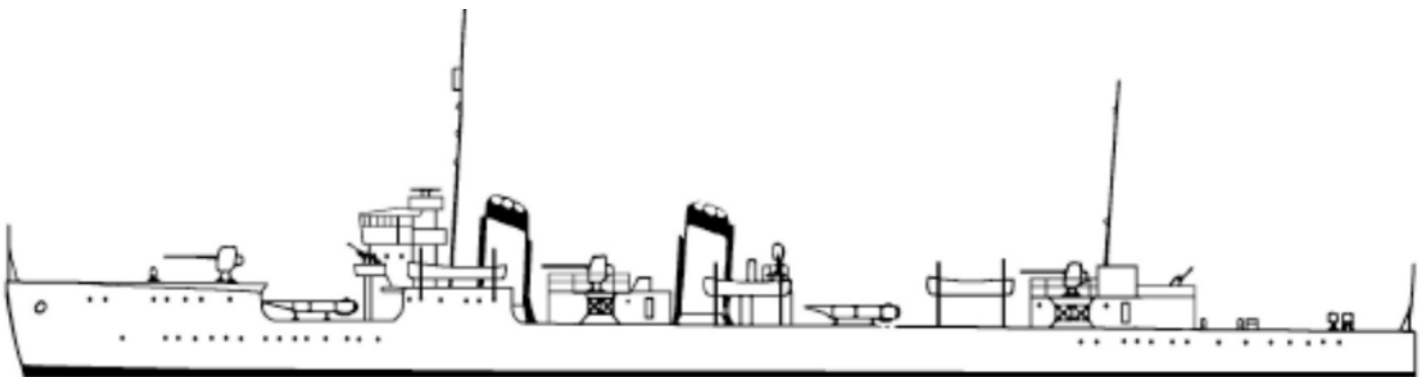
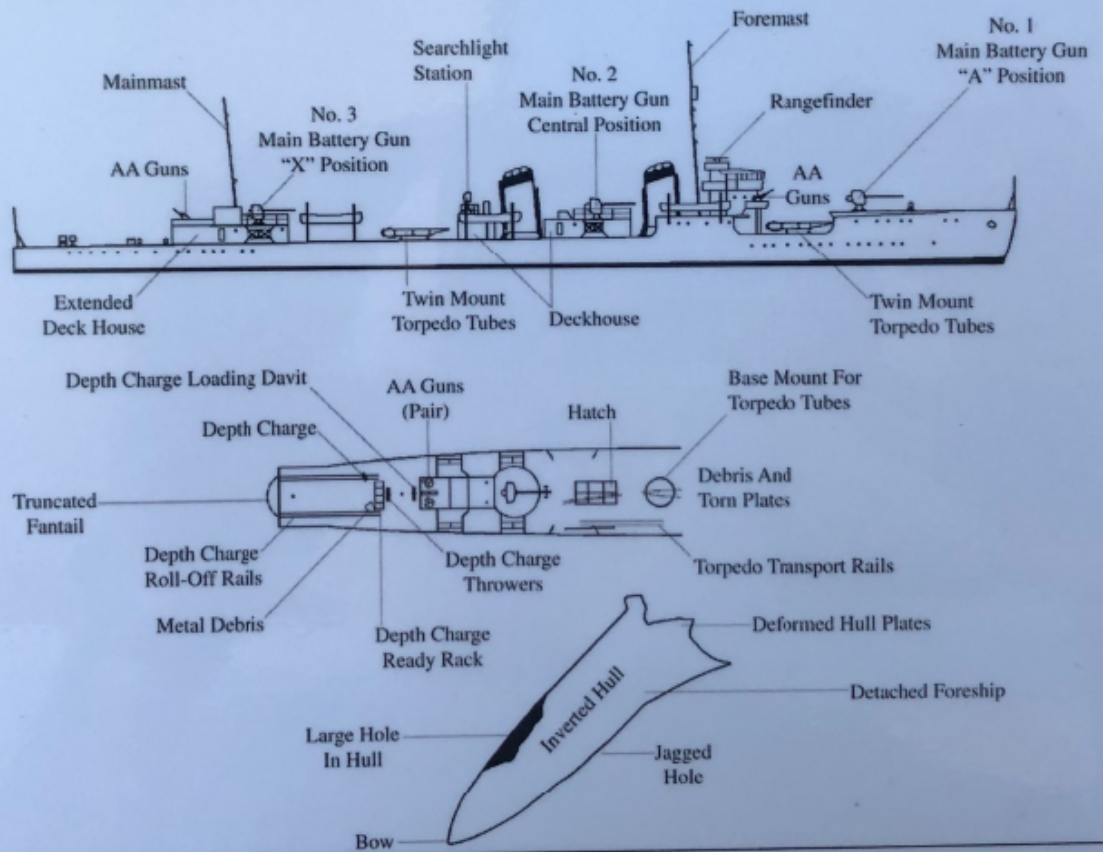


Depth
Shallowest ~ 50m
Deepest ~ 62m

IJN Oite

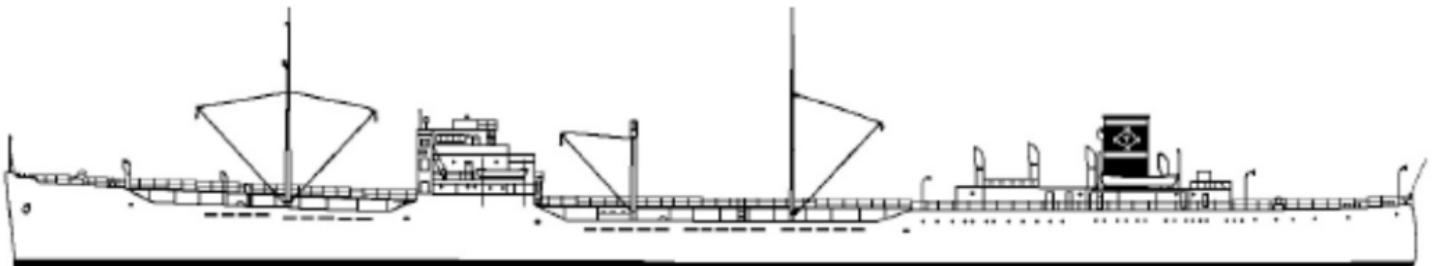
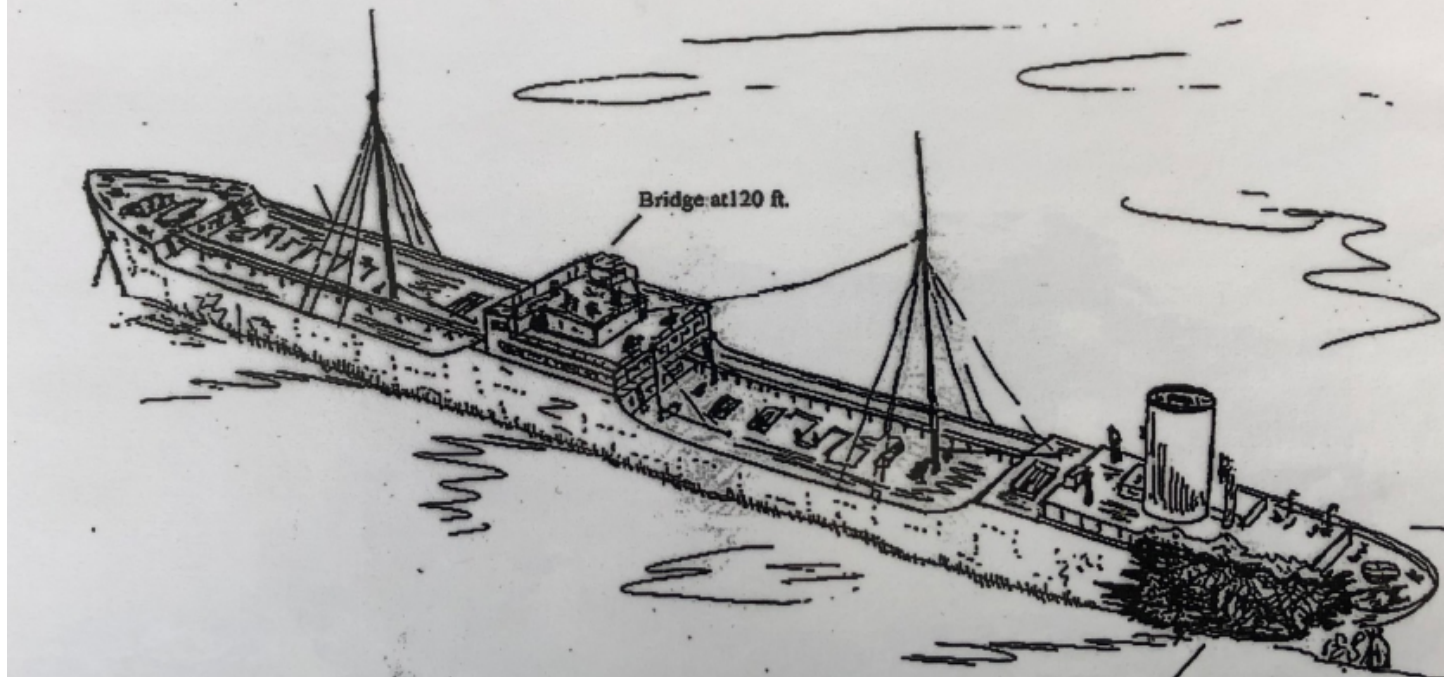
IJN DESTROYER OITE

SIDE VIEW: CONFIGURATION AFTER RECONSTRUCTION
BELOW: WRECK DISPOSITION



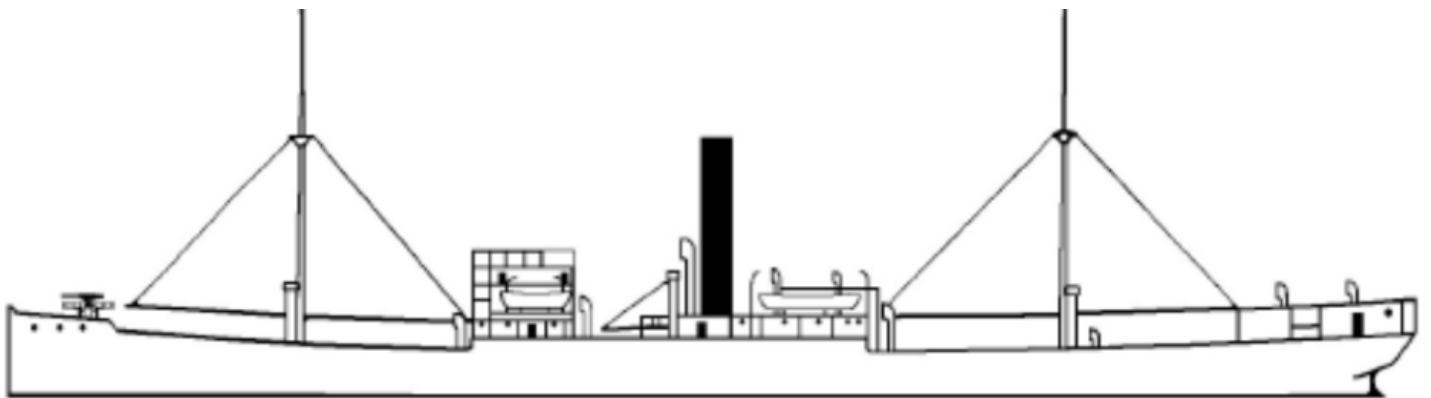
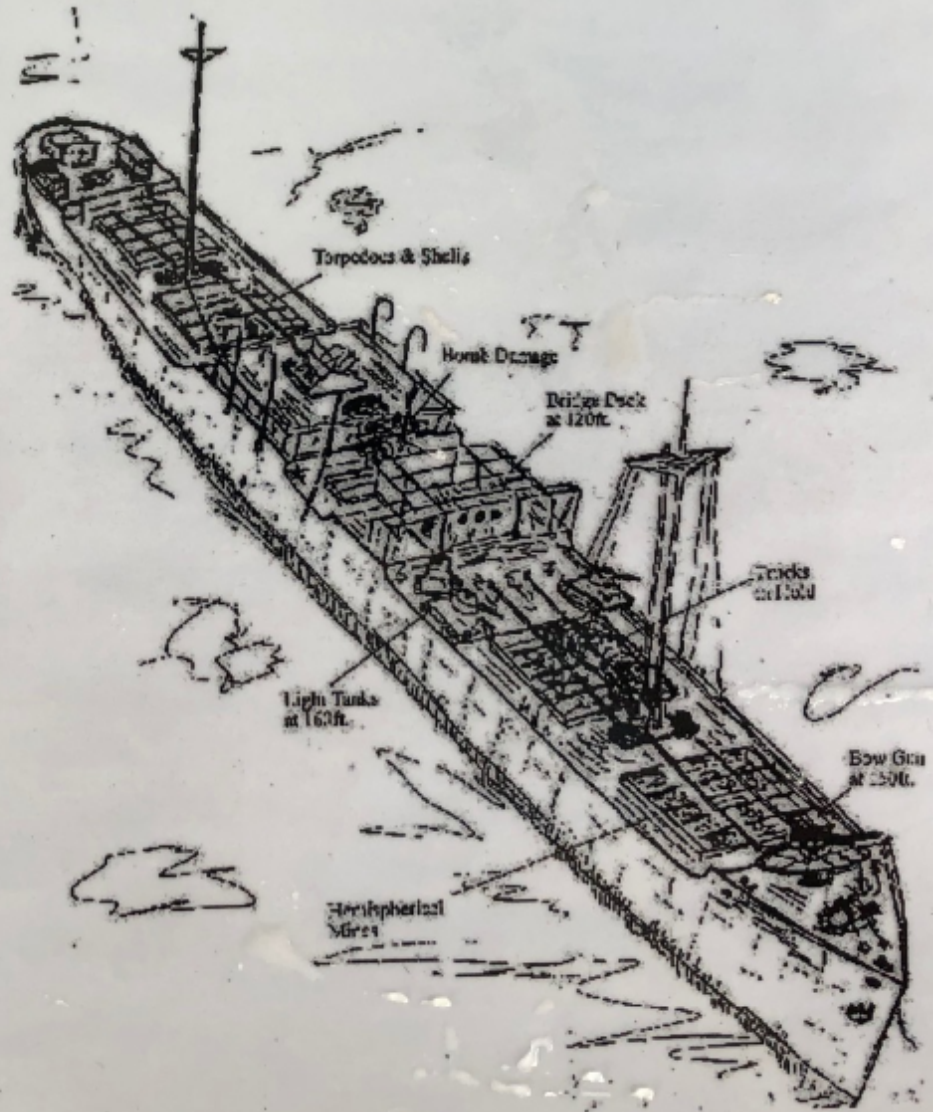
Depth
Main Deck ~
Seafloor ~

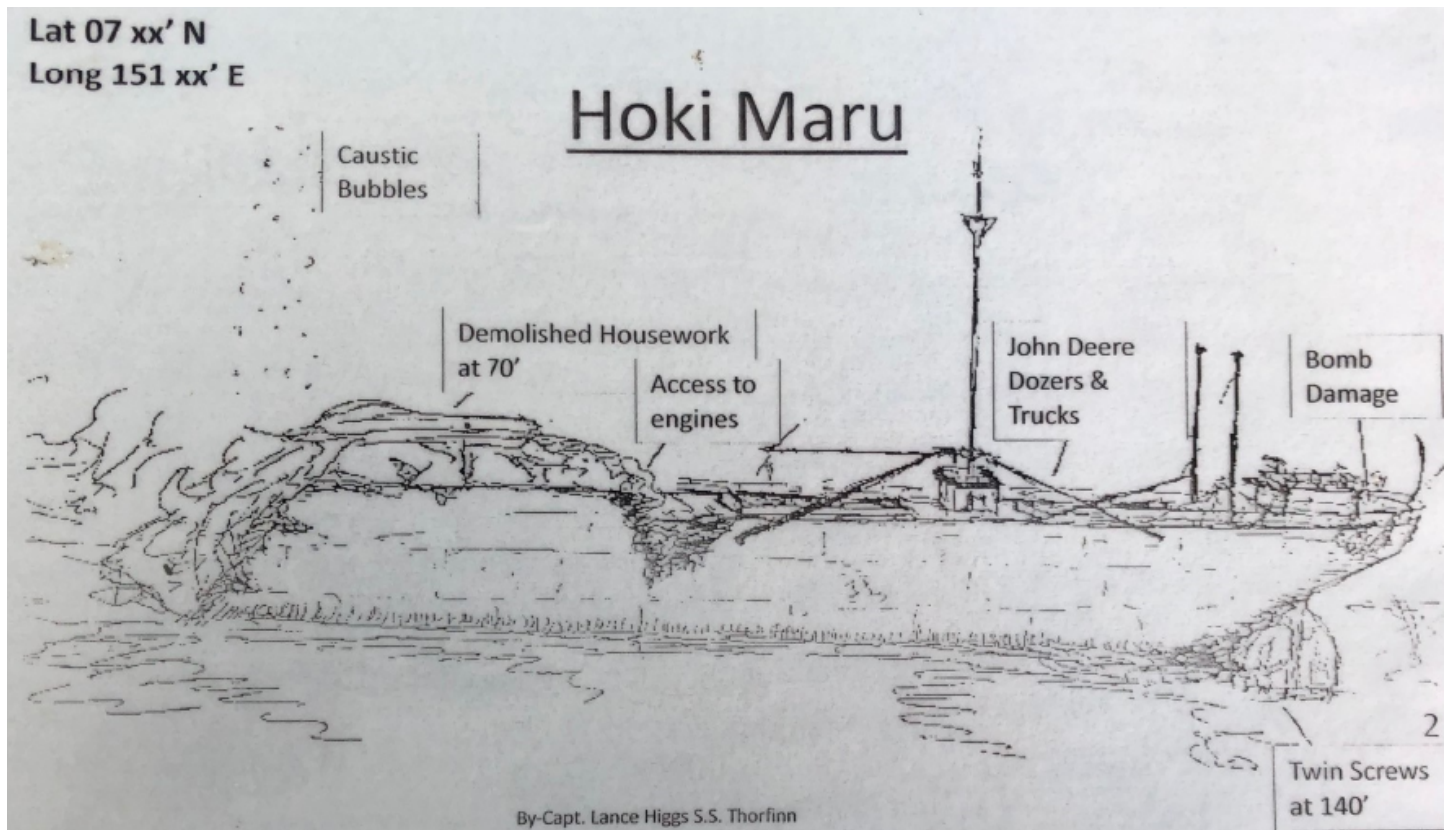
Fujisan Maru



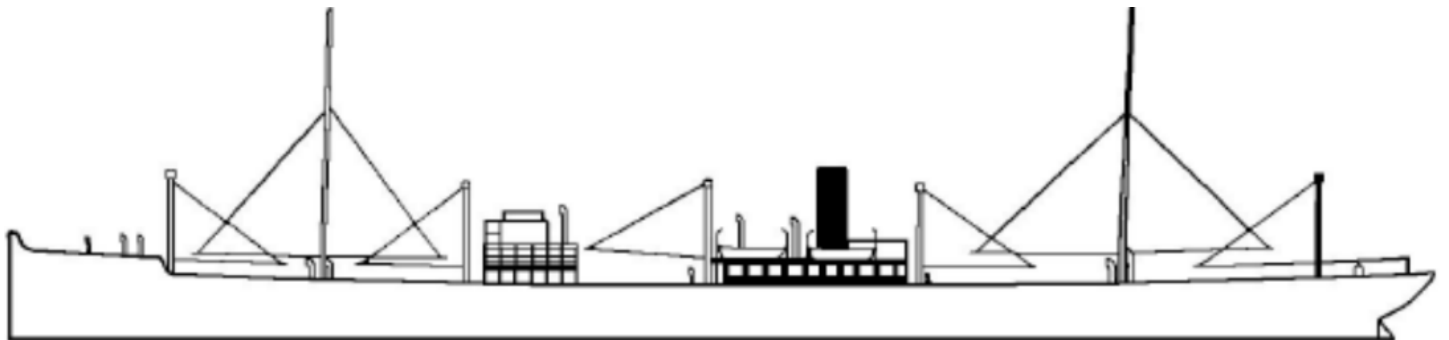
Depth
Shallowest ~ 46m
Deep ~ 65m

San Francisco Maru



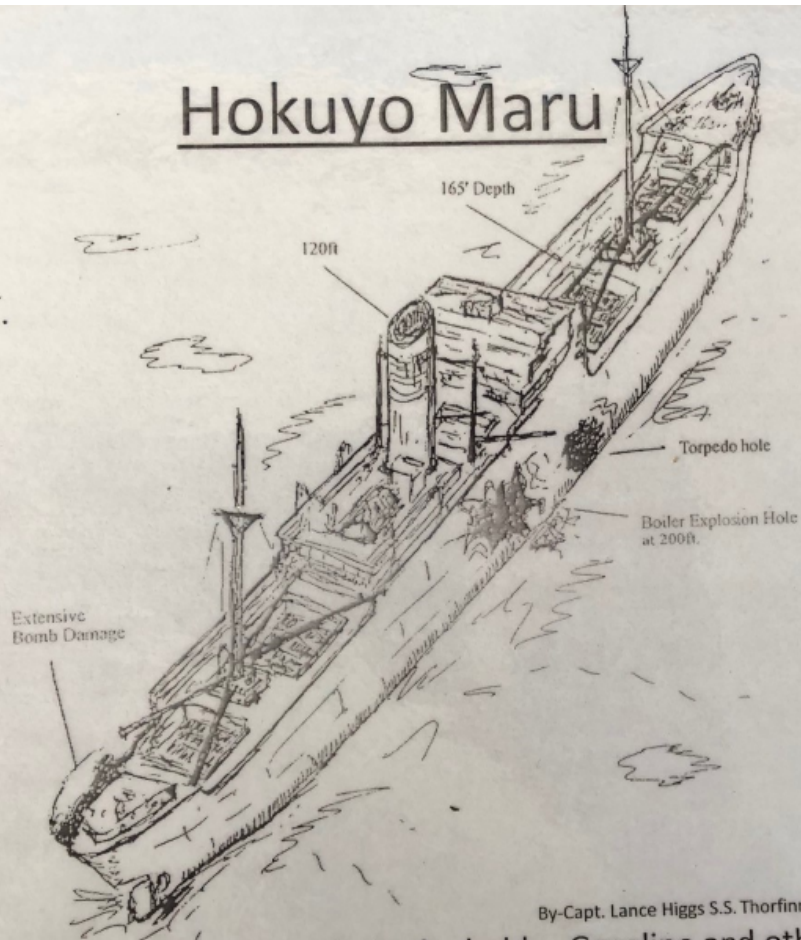


Some fuel seeps from drums in holds. Hold has construction equipment w/ 2 Caterpillar bulldozers and numerous trucks with fencing below. Bow and forecastle are in good shape beyond a debris field separated from the rest of the ship. Max depth 175', deck 150, top 110'

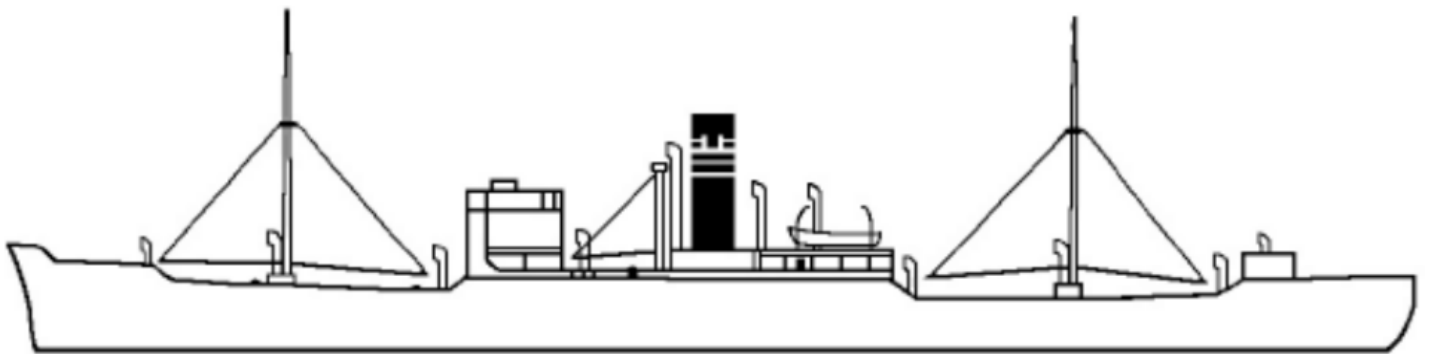


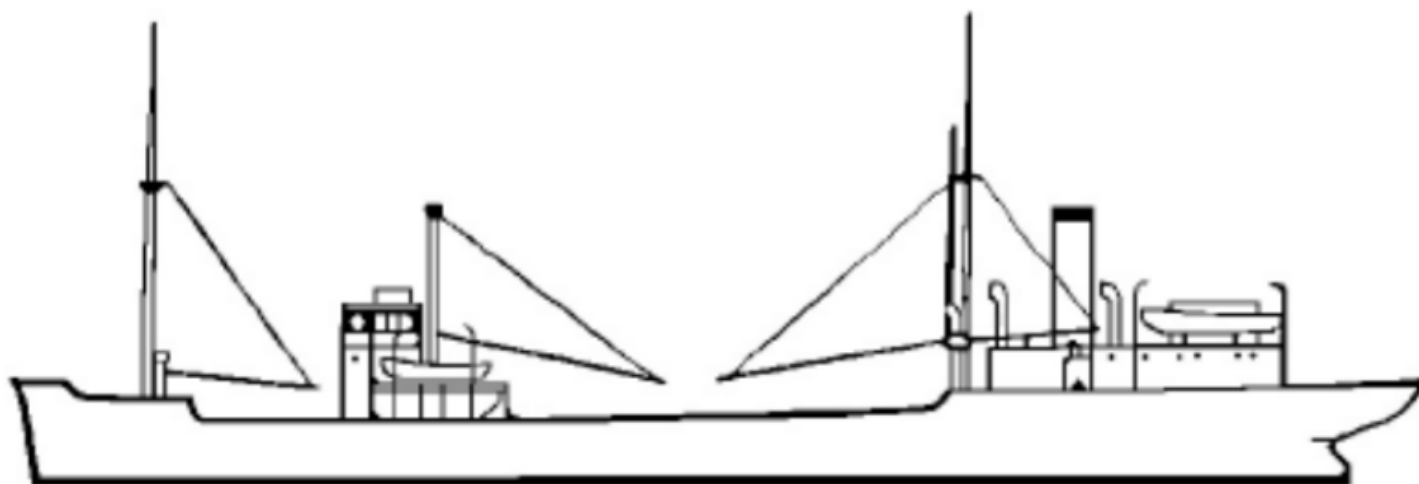
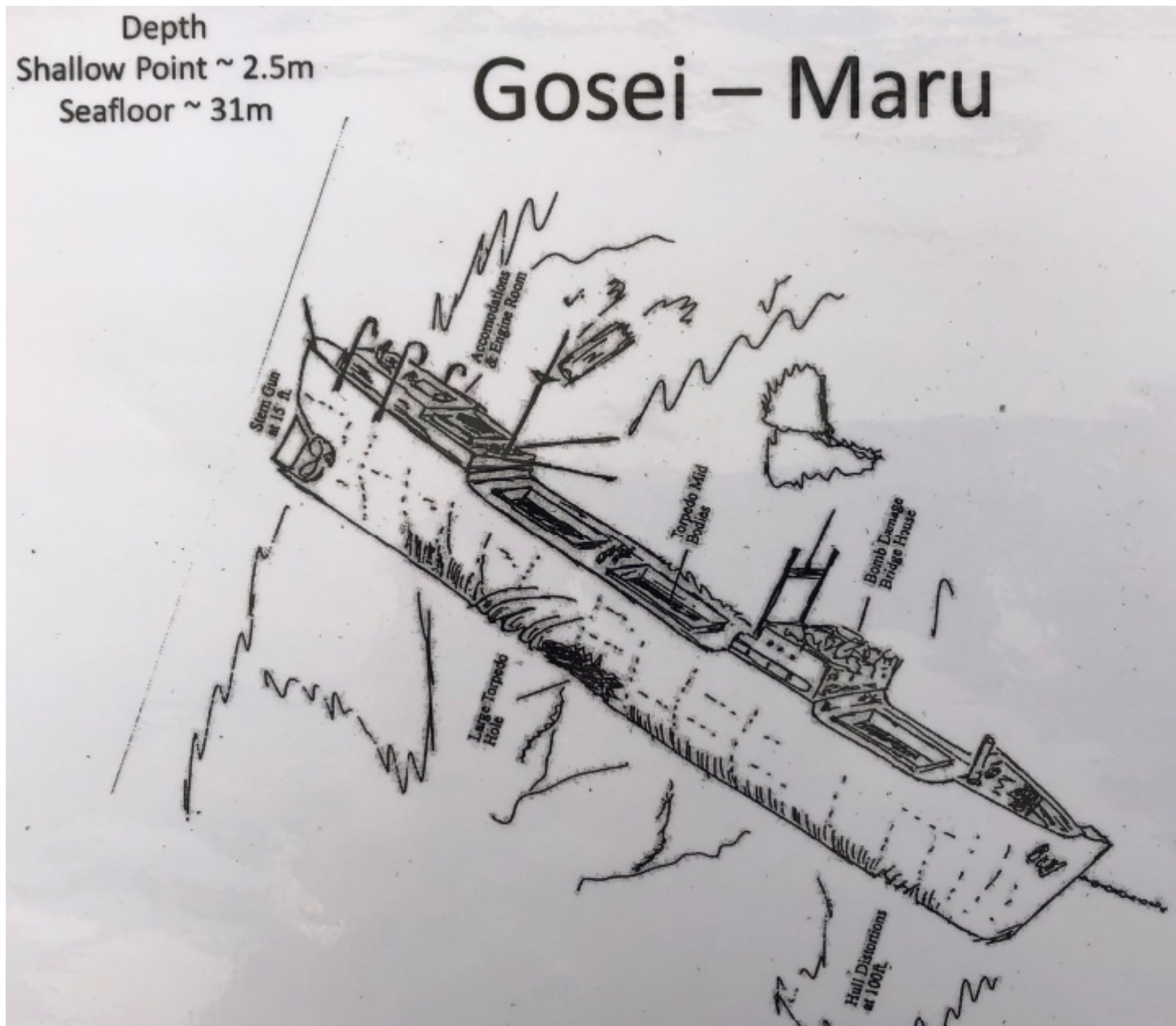
Lat 07 23' N
Long 151 05' E

Hokuyo Maru



Bulldozers, machinery and remains of trucks in the holds. Gasoline and other caustic substances seeps to the surface from this wreck. Helm, binnacle and telegraph are in open water on deck. Highlight is the engine room, reached via the boiler room. Max depth 210', deck 165', top 130'





Depth

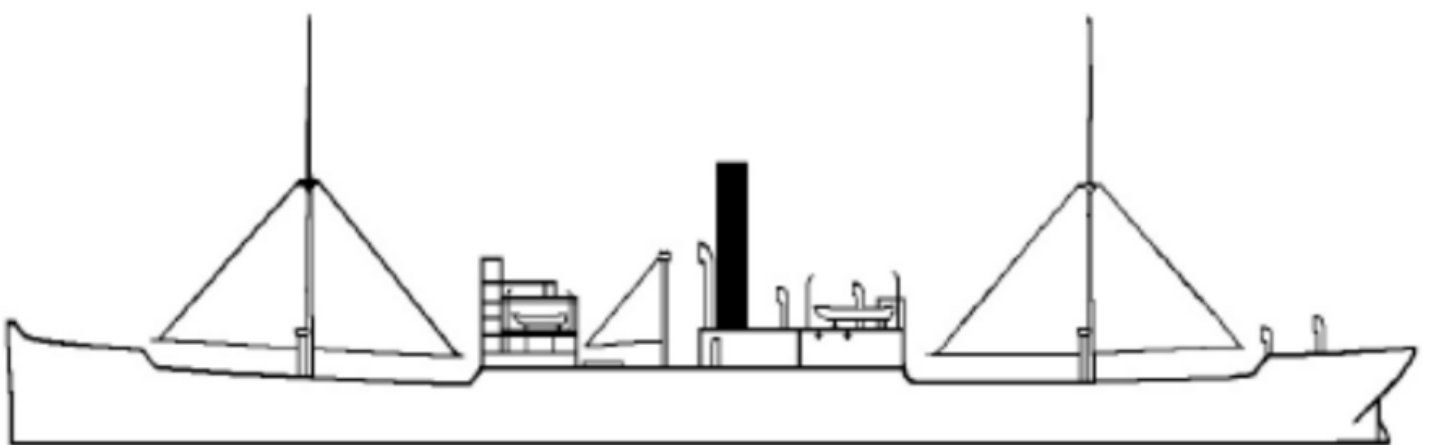
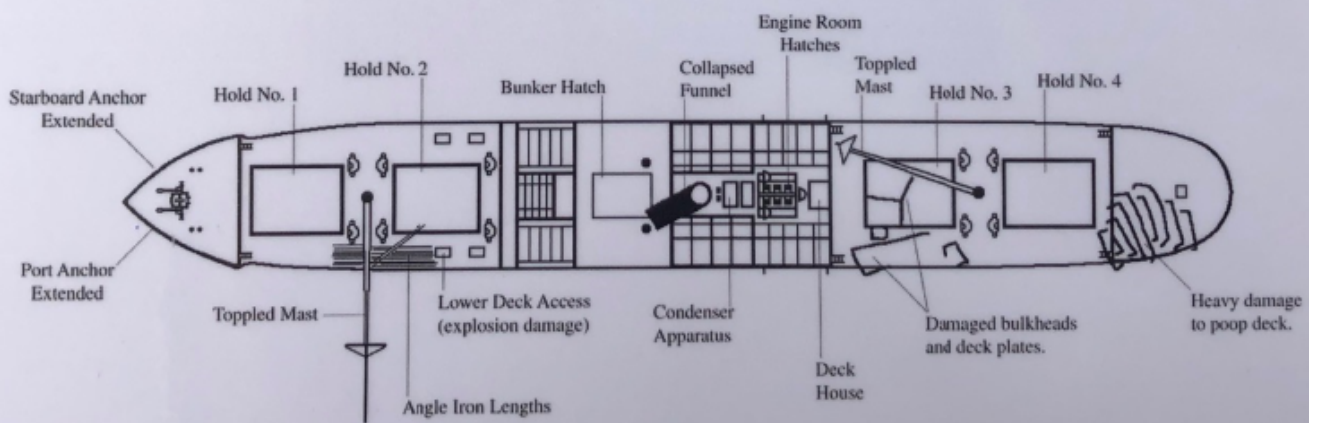
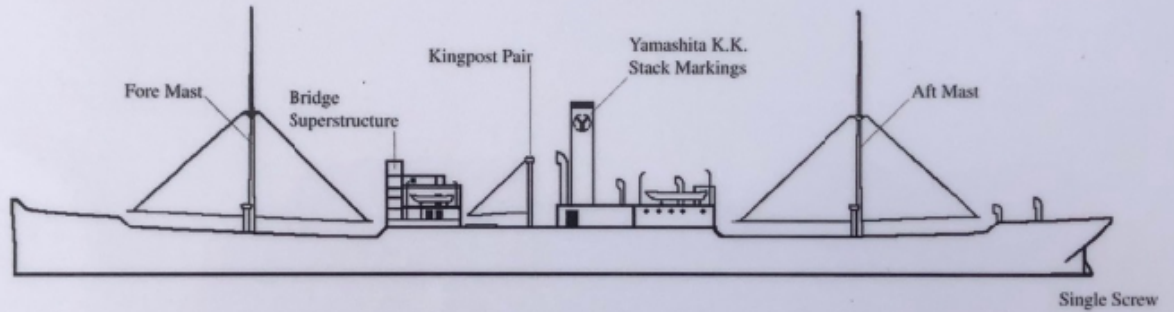
Shallowest ~ 50m

Deepest ~ 65m

Reiyo - Maru

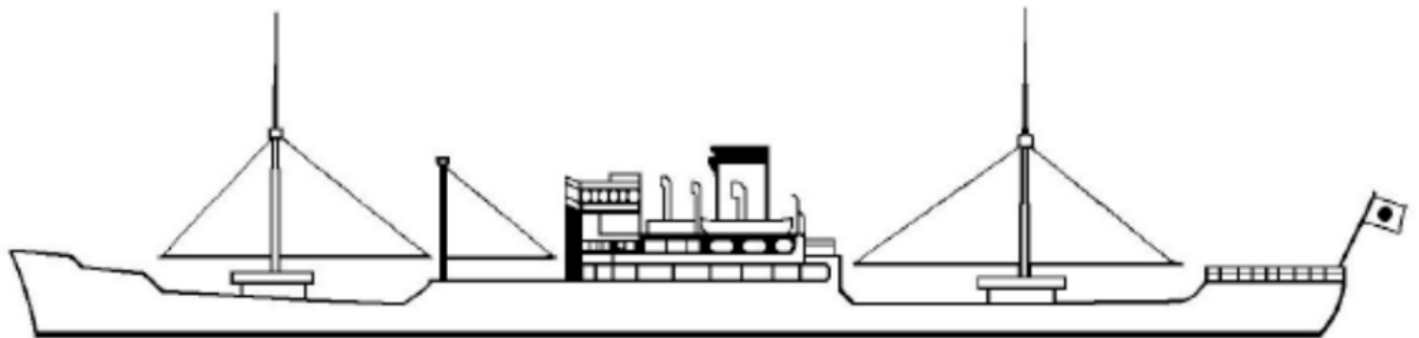
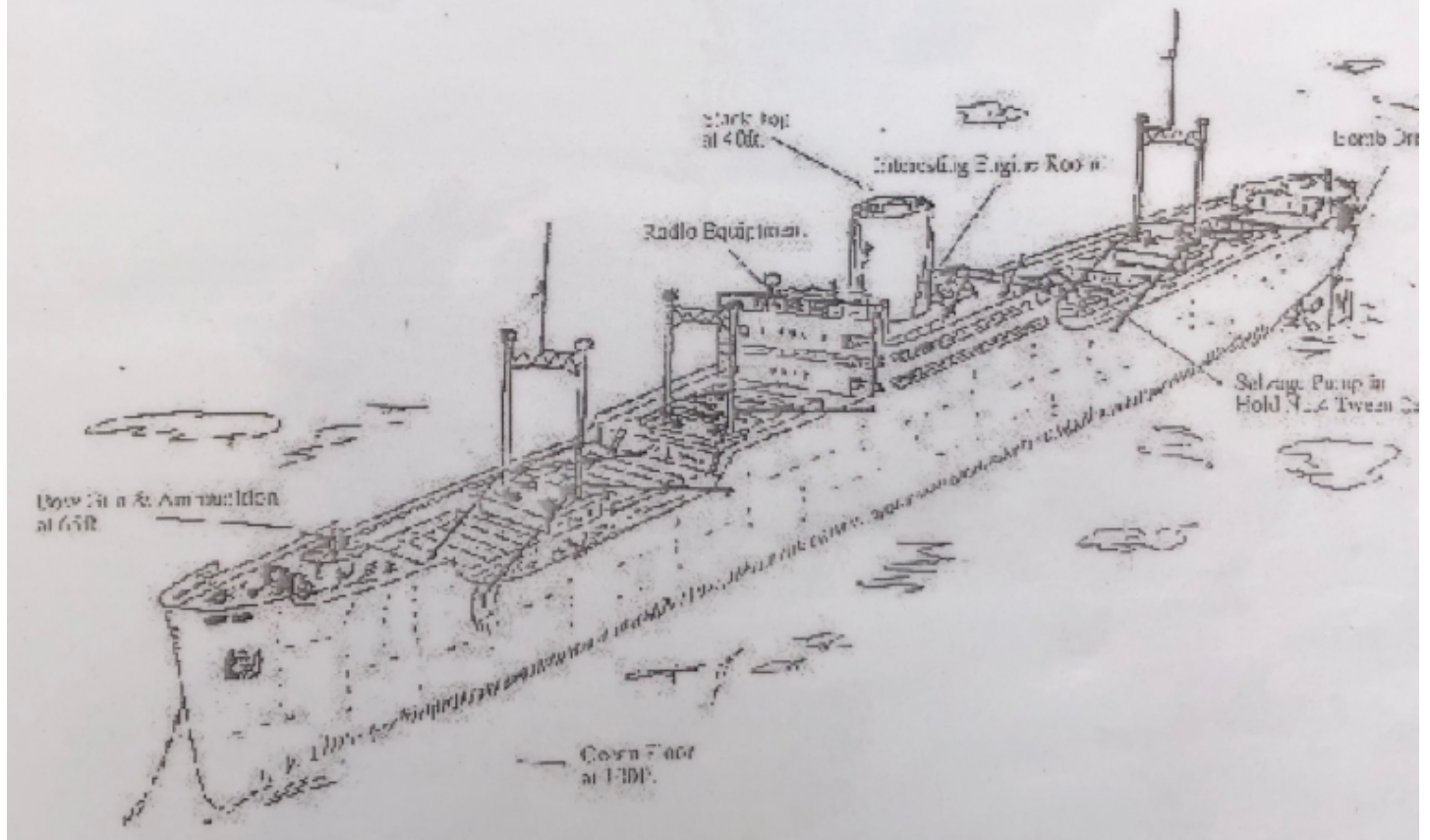
**NAVAL MISCELLANEOUS AUXILIARY
REIYO MARU**

**SIDE VIEW: COMMERCIAL CONFIGURATION
TOPSIDE VIEW: WRECK DISPOSITION**



Depth
Super Structure ~ 12m
Seafloor ~ 40m

Kansho - Maru



Lat 07 20' 0 N
Long 151 40' 0 E

Nippo Maru



Deck cargo of possible American guns. Holds full of shells, mines, fuel drums, crates of bottles etc. Tank on port deck. Water transportation tanks in forward hold. Photogenic bridge and helm, engine telegraph (C3PO). Max depth 165', deck 130', top 100'

